



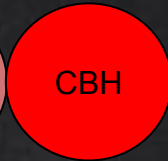
KTH (THS) PhD Chapter (Dr)



Introduction



The university: KTH



Campus *Valhallavägen (AlbaNova), Kista, Södertälje, Flemingsberg*

Education *Bachelor, Master,
PhD*

Research *Focus areas*

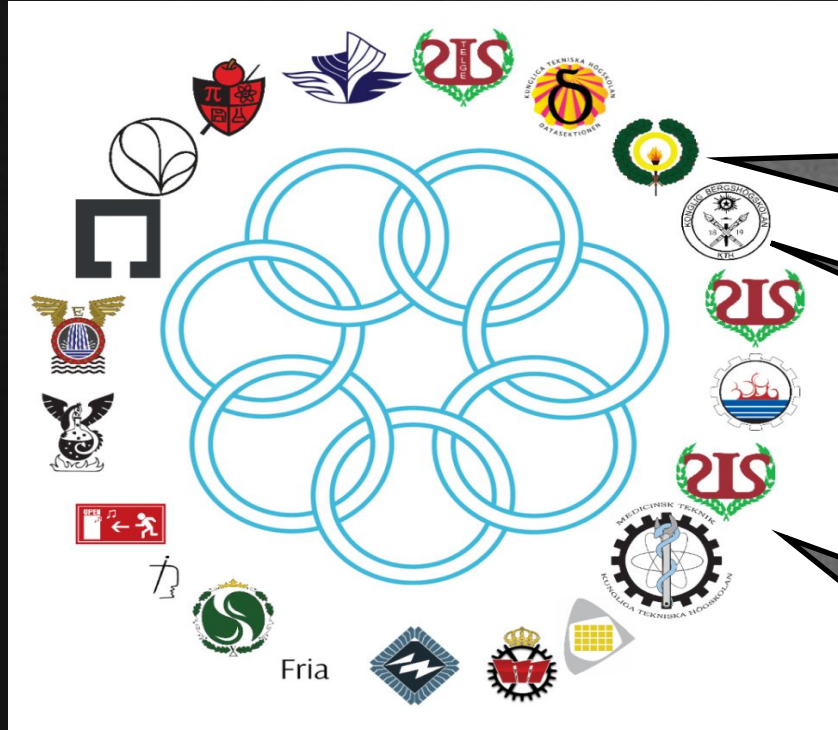


Doctorate programs

Admin & Mgmt *Central and Local*



The student union: THS



PhD chapter
(Dr) DoB:
24-03-1980

Oldest
chapter:
199 years

Youngest
chapter:
2 years

THS age:
116 years

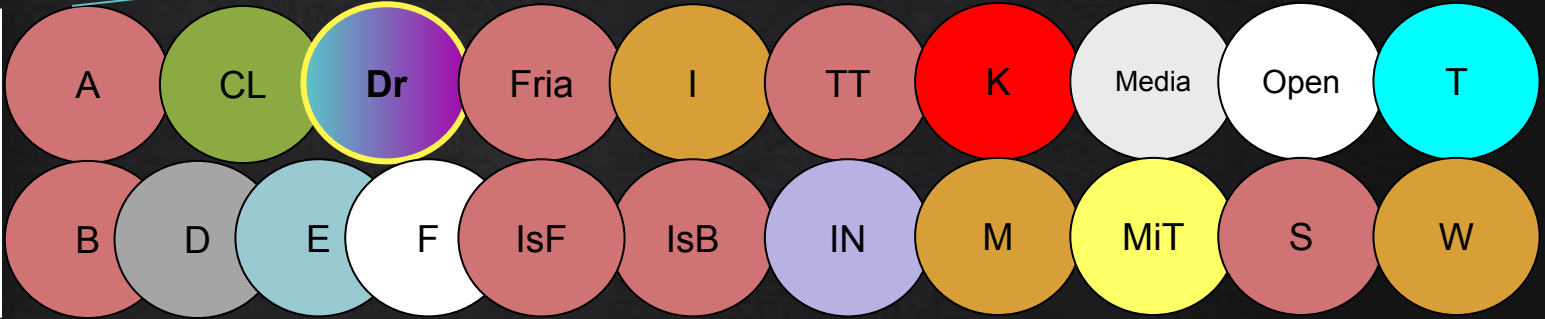
KTH students
belong to one
of THS chapters

Central

Union Board and
Management (K&F)
KL)



Local: 21 chapters



All PhD
students
belong to the
PhD chapter
(Dr)



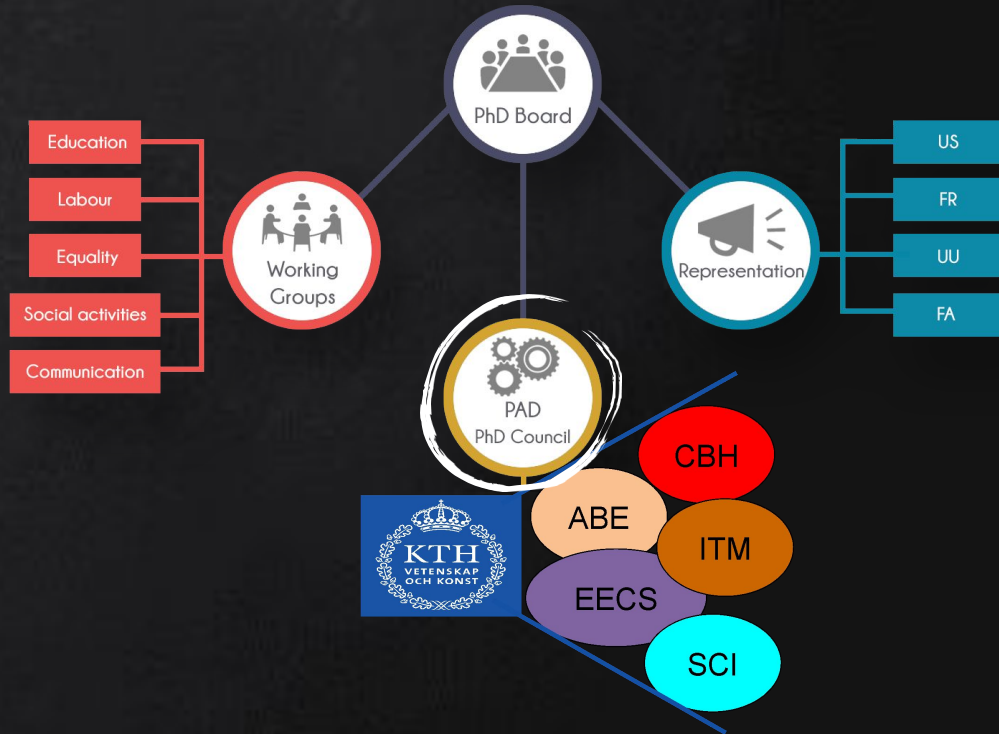
And Dr is
special ...





The PhD Chapter

- The PhD Chapter represents all PhD students of KTH
- You apply for membership through the THS Student Union
- Each school has **PhD representatives**, you can apply to become one!
- Representation for the PhD Chapter is time compensated





The PhD Chapter Board 2018/19



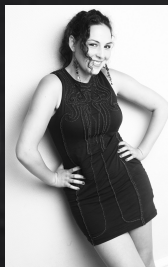
Robin
Palmberg

Chair



Tage
Mohammadat

Vice-chair



Amanda
Kessler

Events



Jesper
Karlsson

Treasurer



Emma
Riese

Education



Fangkai
Yang

IT/Web



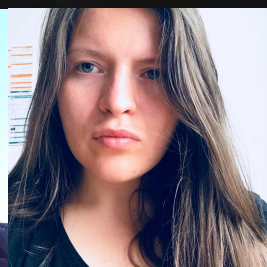
Elena
Malakhatka

Business



Sriharsha
Bhat

Social



Kateryna
Morozovska

Master of Ceremonies

These people are also the ultimate PhD student representatives centrally at KTH and THS!
For any PhD chapter related questions, email: board@dr.kth.se

What does THS PhD Chapter do?

Taking care of all PhD students...



...when they start

(common introduction course & networking events)

...while they are here

(evaluation of quality of education & supervision)

(development of soft skills & complementary competencies)

...when they are about to graduate

(career development & opportunities)

...Events and Representation

Events

PhD chapter events Autumn 2018

Always in T-Centralen "TC" at Drottning Kristinas väg 29
Doors open at 17.17 Event starts at 18.18

October

2018-10-04	Thursday	40	Game Night
2018-10-11	Thursday	41	Game Night Deadline for Badges
2018-10-18	Thursday	42	workshop: How to Elect Council Members Deadline Voting
2018-10-19	Friday	42	PhD Pub
2018-10-24	Wednesday	43	Halloween Themed Chapter Meeting Horror Movie

November

2018-11-01	Thursday	44	Game Night
2018-11-07	Wednesday	45	Idea leading Paper Writing Workshops
2018-11-15	Thursday	46	KTH Innovation
2018-11-21	Wednesday	47	Game Night
2018-11-23	Friday	47	PhD Pub
2018-11-29	Thursday	48	Serendipity with Esmaelzadeh

December

2018-12-05	Wednesday	49	Pedagogical Meetups and How to Make a Poster
2018-12-07	Friday	49	Council Election Day EECS
2018-12-07	Friday	49	PhD Pub
2018-12-10	Monday	50	Council Election Day
2018-12-11	Tuesday	50	Council Election Day
2018-12-13	Thursday	50	Lucia Baking
2018-12-17	Monday	51	Chapter Meeting with Christmas Setting
2018-12-18	Tuesday	51	Council Election day
2018-12-19	Wednesday	51	Council Election day

board@dr.kth.se



PhD chapter events Spring 2019

Always in T-Centralen "TC" at Drottning Kristinas väg 29
Doors open at 17.17 Event starts at 18.18

January

2019-01-10	Wednesday	2	Game Night
2019-01-16	Thursday	3	Quiz Night
2019-01-24	Wednesday	4	Research Impact: Ambitions and Practice
2019-01-30	Thursday	5	Game Night

February

2019-02-07	Wednesday	6	Science Slam
2019-02-13	Thursday	7	Valentine's Day Dancing
2019-02-21	Wednesday	8	Hybrid Methods and Flipped Classrooms Seminar
2019-02-27	Thursday	9	Pedagogical Meetups

March

2019-03-07	Wednesday	10	Chapter Meeting
2019-03-13	Thursday	11	Research Education and Policy Seminar
2019-03-21	Wednesday	12	KTH Future Seminar
2019-03-27	Thursday	13	Research and Education Synergy Challenges in Academia

April

2019-04-04	Wednesday	14	Job Prospects for PhDs with Companies
2019-04-10	Thursday	15	Game Night
2019-04-18	Wednesday	16	Easter Crafts
2019-04-24	Thursday	17	Game Night

May

2019-05-02	Wednesday	18	Game Night
2019-05-08	Thursday	19	Interdisciplinary Workshop
2019-05-16	Wednesday	20	Chapter Meeting
2019-05-22	Thursday	21	Mentorship platform
2019-05-30	Wednesday	22	Summer Party

board@dr.kth.se



Representation

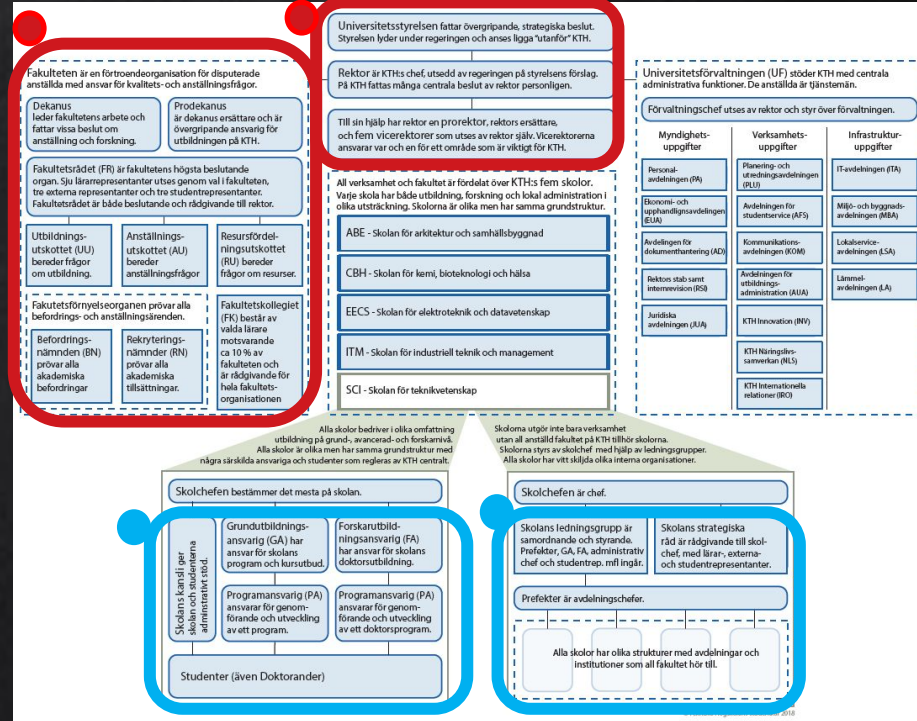
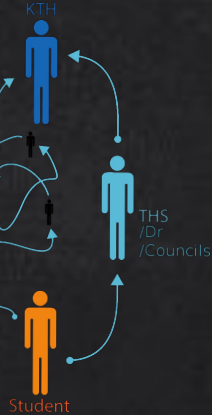
Centrally:

US,
FR,
UU,
FA

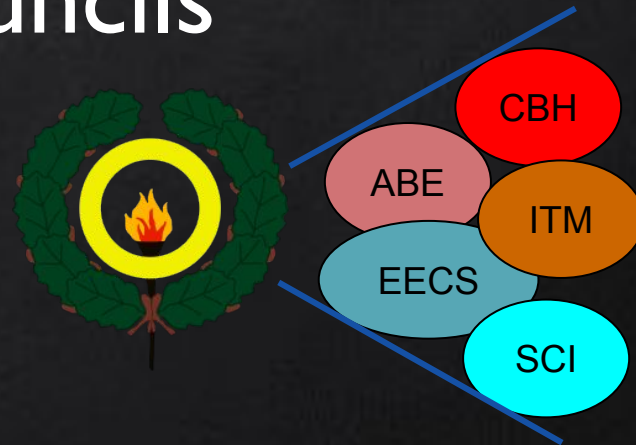


Locally:

LG, SR,
Committees, Programes

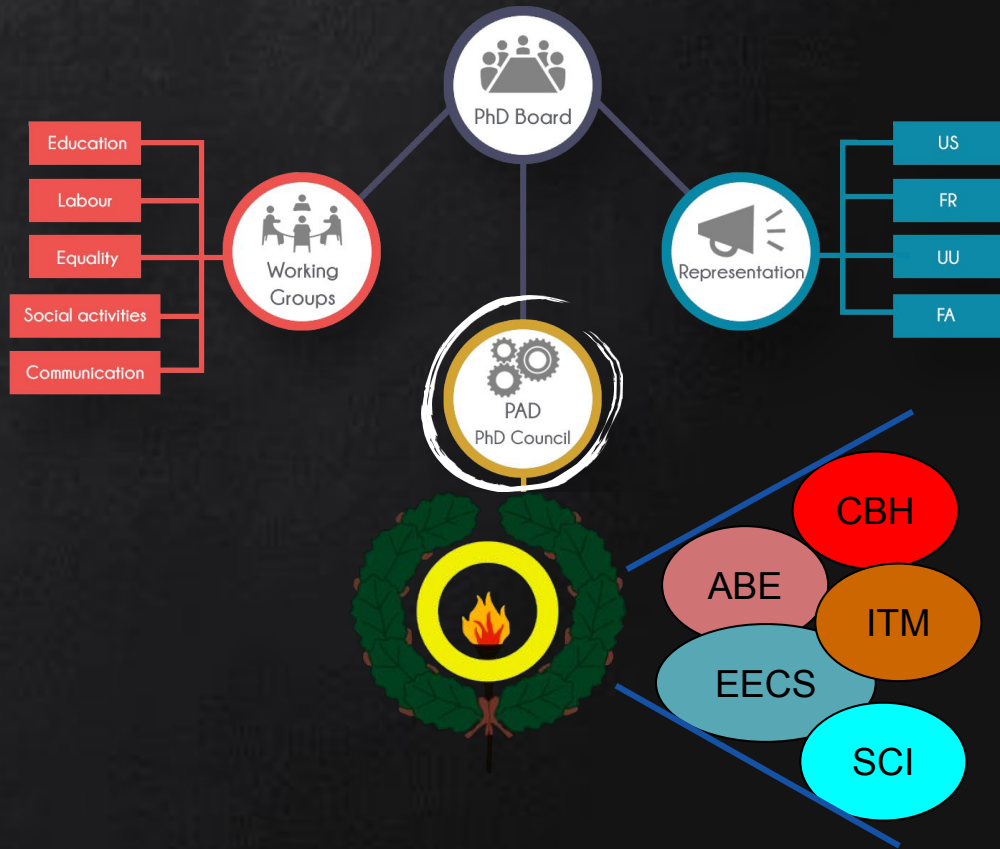


PhD School Councils



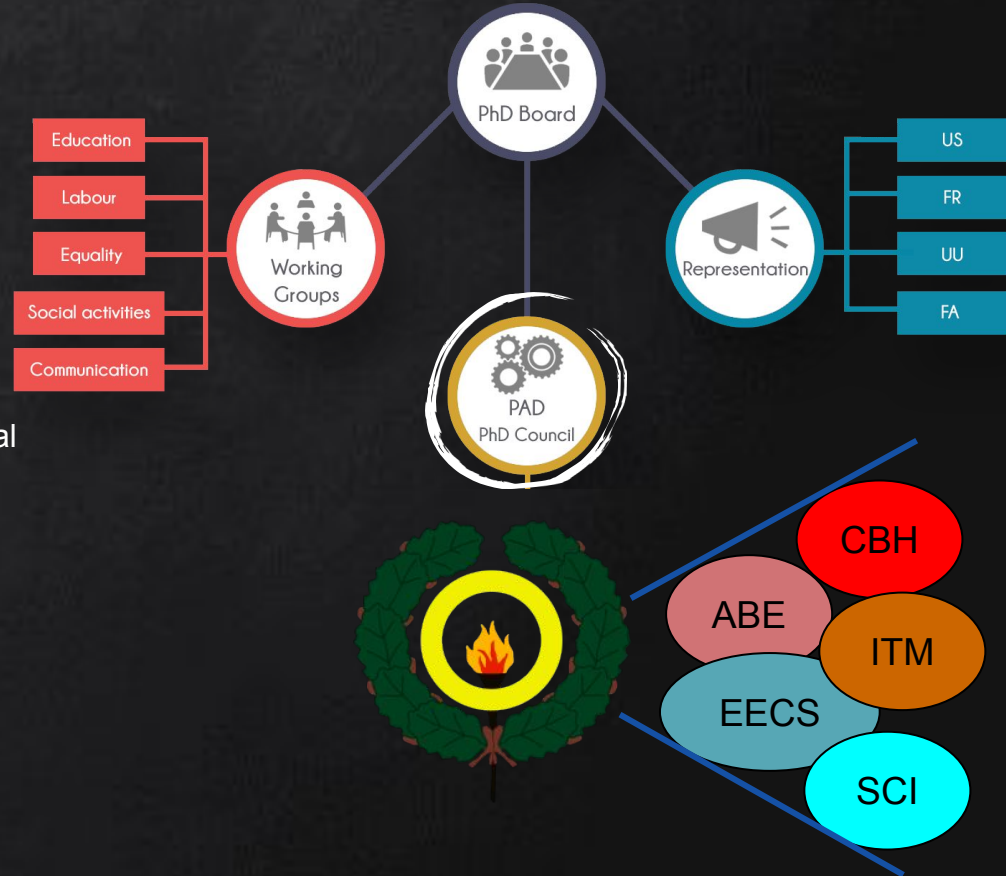
PhD School Councils - Regulatory docs

- [Högskolelag](#)
- [Högskoleförordning](#)
- [Studentkårsförordning](#)
- [Riktlinjer för studentinflytande på KTH](#)
- [THS Stadgar/Statutes](#)
- [THS Reglemente/Bylaws](#)
- [THS Vision](#)
- [THS Åsiktsdokument/Views](#)
- [PhD Chapter Statutes](#)
- [PhD Chapter Bylaws](#)



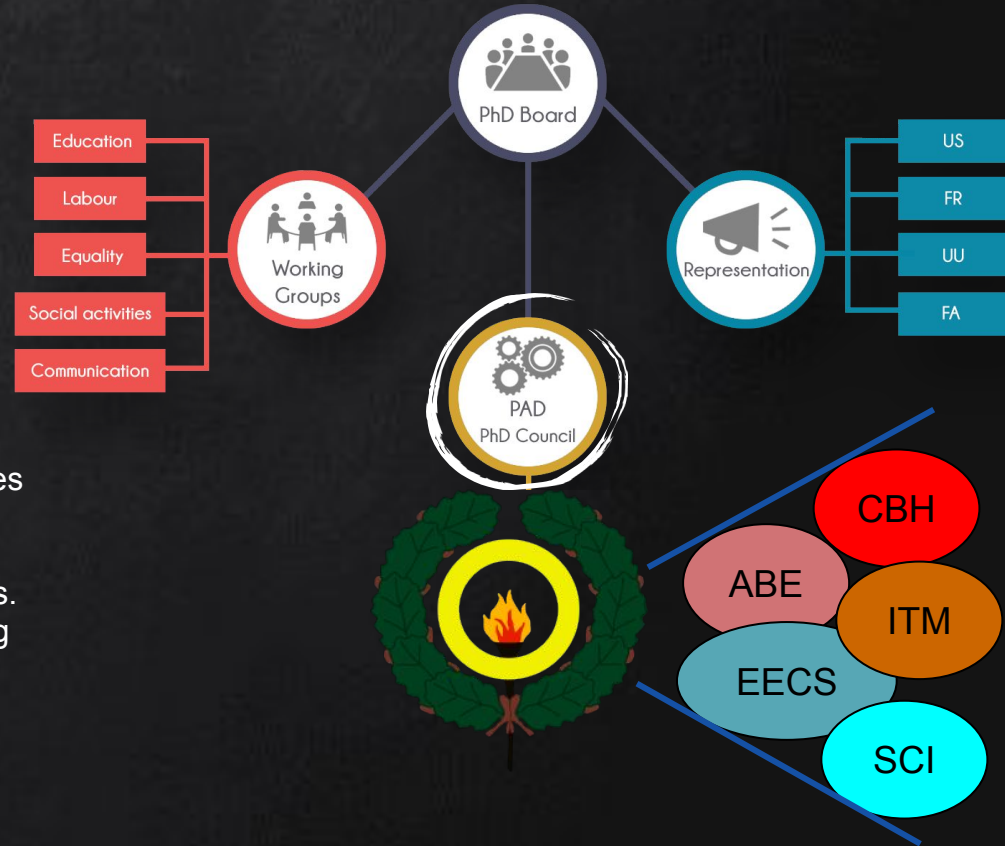
PhD School Councils - Values & Mission

- Education
 - Works to ensure high quality of doctoral studies.
 - Through representation and policy making.
- Welfare:
 - Works to ensure that PhD students at KTH have various leisure activities.
 - Works to ensure that students enjoy their doctoral study time at KTH.
 - Works towards the rights of students.
 - Through social events and PhD advisory role.
- Future:
 - Works to ensure that all students at KTH get opportunities to develop their professional skills
 - Through career initiatives and projects.

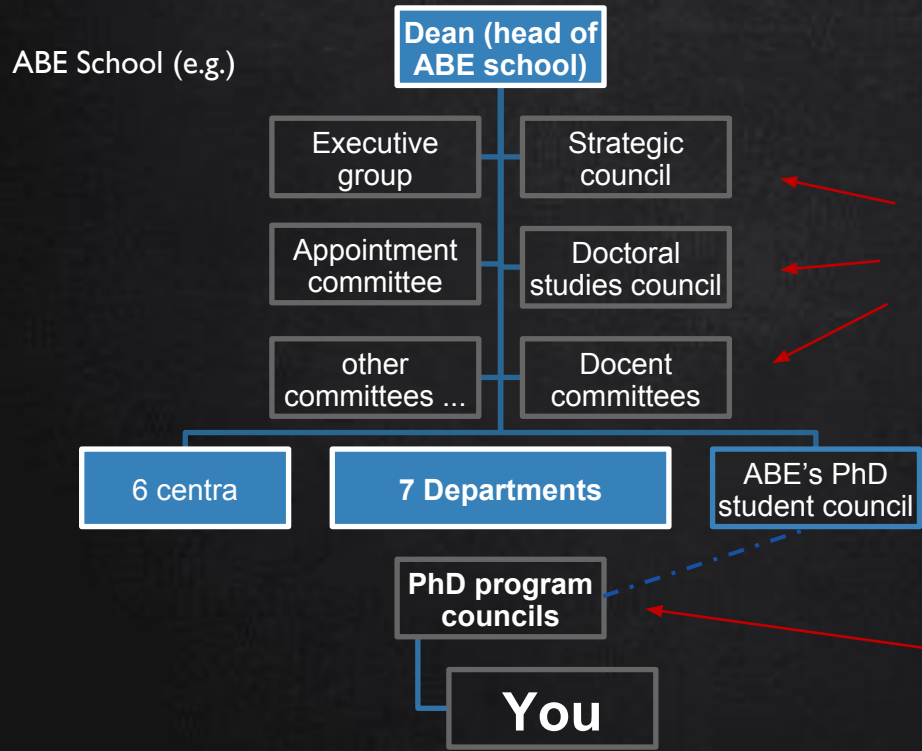
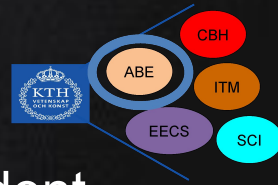


PhD School Councils - Composition

- Presidium (Chair and Vice chair)
 - Strategic and Executive responsibilities
 - Summons the councils and council meeting
- Board: ultimately responsible before the school council
 - Up to 10 members including presidium
 - Responsible for the council decisions
 - Represent the students at the school committees (Should be THS members)
- Functionary: any roles that support the council's operations.
- PhD School council meeting is the highest decision making body.



The PhD school council - Representation

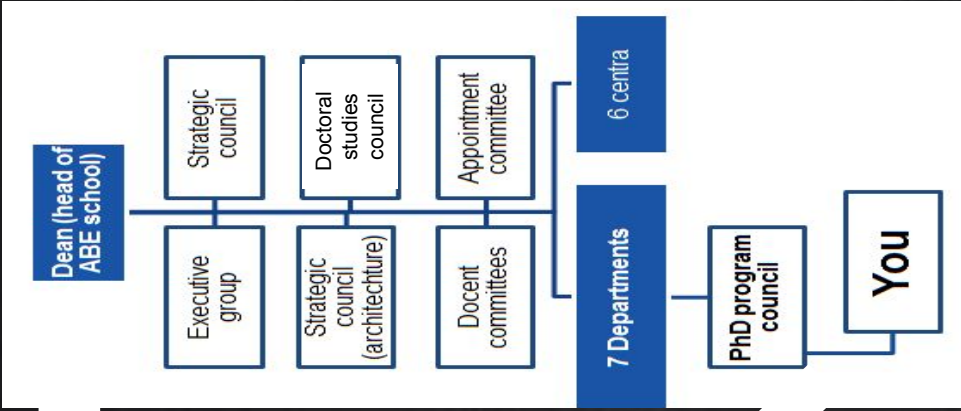
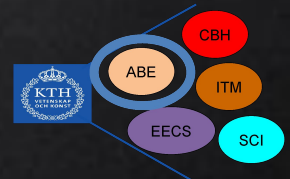


We have one Ph.D. student representing us in each council / group / committee on school level.

(Elected each year at the **ABE PhD student council**)

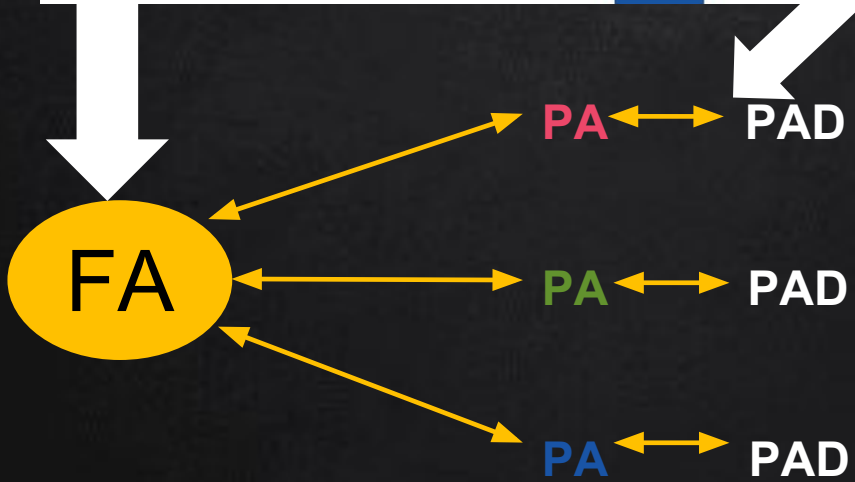
Each PhD program has an elected PAD ("Programansvarig Doktorand") – **your go-to person!**

The PhD school council - PADs



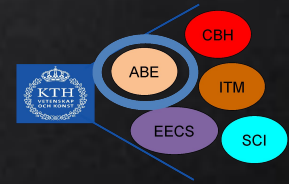
Structure of PhD programs

Doctoral studies council



- 1 Director of doctoral studies (FA)
- +
- Program coordinators (PA)
- +
- 1 PhD student representative
- =

ABE School



PhD Program (Arkitektur)

PhD Program (Bygghvetenskap)

PhD Program (Humanists & Soc. Sci.)

PhD Program (Art, Tech. & Design)

PhD Program (Ground & Water tech.)

PhD Program (Planning & Decision analysis)

PhD Program (Management, Economy & Law)

PhD Program (Transport Science)

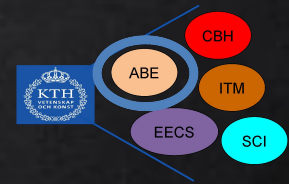
PhD Program (Geodesi & Geo informatics)



ABE
School


~=Department


ABE School



Programsansvarig – Program Responsible

PA (Arkitektur) 

PA (Bygghvetenskap) 

PA (Humanists & Soc. Sci.) 

PA (Art, Tech. & Design) 

PA (Ground & Water tech.) 

PA (Planning & Decision analysis) 

PA (Management, Economy & Law) 

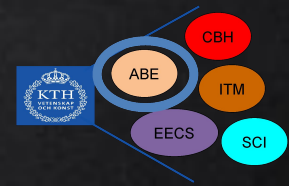
PA (Transport Science)

PA (Geodesi & Geo informatics)

ABE School

A yellow circle containing the text 'ABE School' has five yellow arrows pointing to the right, towards the list of program areas.

ABE School



Programsansvarig Doktorand – Program Responsible

PAD (Arkitektur)

PAD
(Byggvetenskap)

PAD (Humanists & Soc. Sci.)

PAD (Art, Tech. &
Design)

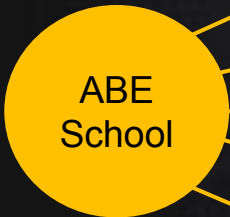
PAD (Ground & Water tech.)

PAD (Planning & Decision analysis)

PAD (Management, Economy & Law)

PAD (Transport Science)

PAD (Geodesi & Geo informatics)



PhD School Councils Simplified Plan 2019

PhD School Councils 2019

...PhD school council elections

This workshop

Announcement of council vacancies (Board+ PADs) - Nov

Election days -Dec 7,10,11,18,19

...Operations

Endorsements

Teambuilding

Online presence: KTH social group, emails, slack

Bilateral board meetings

Workshops (e.g. Education council and future faculty)

Representations running ...

Events running ...



CONTACTS: WEBSITE AND SOCIAL MEDIA

Our website and Facebook page are always update and looking for your contributions.



Our visitors and likes are continuously increasing.



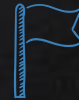
- news in PhD chapter,

- events,



- organizational changes

- and opportunities



More info at: <http://dr.kth.se>