



PhD Chapter at KTH

Doktorandsektion vid THS



(Dr)



Introduction



The Organisation: KTH



Campus Valhallavägen (+AlbaNova), Kista, Södertälje, Flemingsberg, Solna

Education Bachelor, Master,
PhD

Research Focus areas

} Doctorate programs

Admin & Mgmt Central and Local (5 schools)

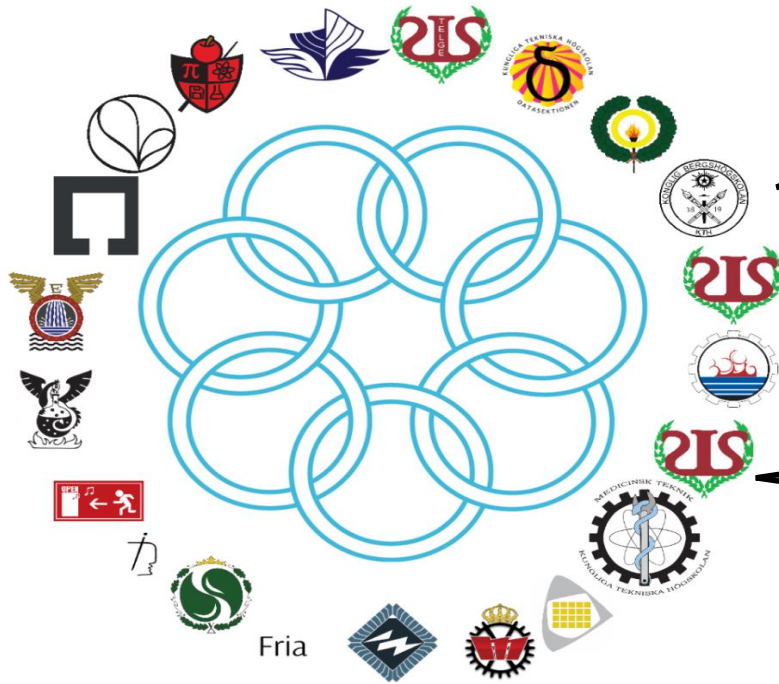


THS: Since 1902

Oldest chapter (B): Since 1819

Number of chapters: 21

Youngest chapter (IsF): Since 2016

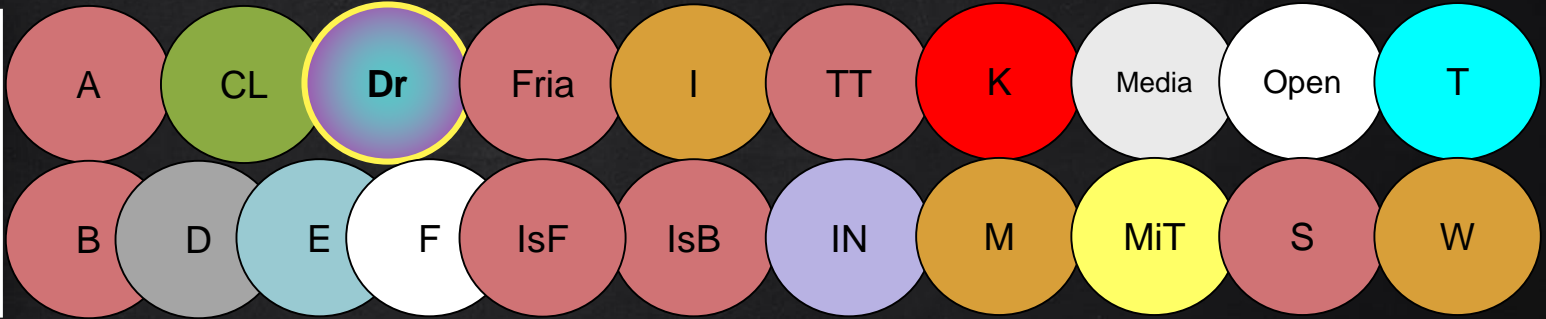


Fria



The Organisation: THS

Union Parliament (KF)



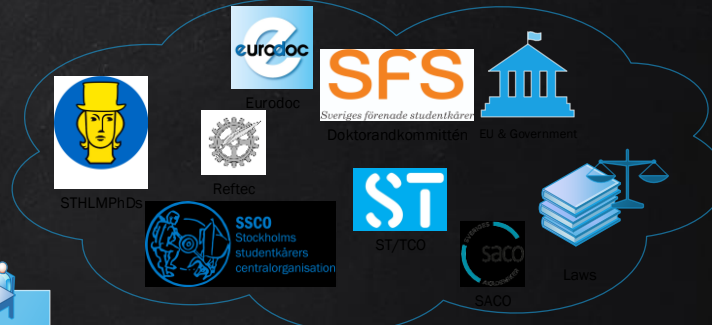
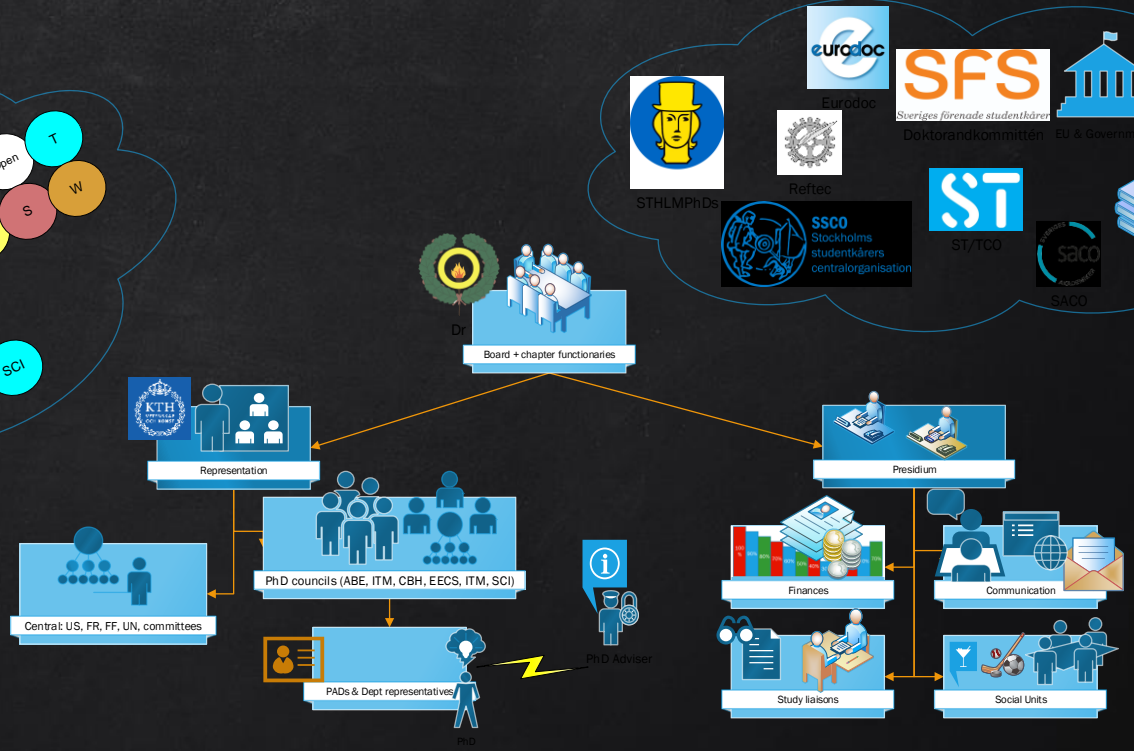
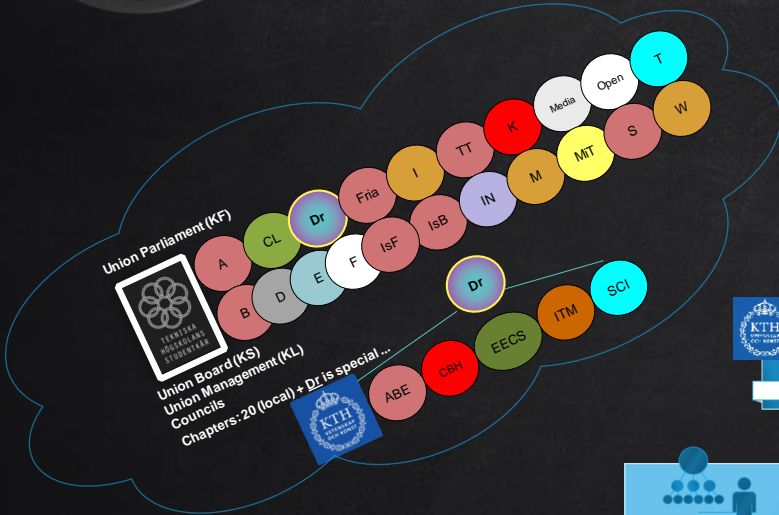
Union Board (KS)

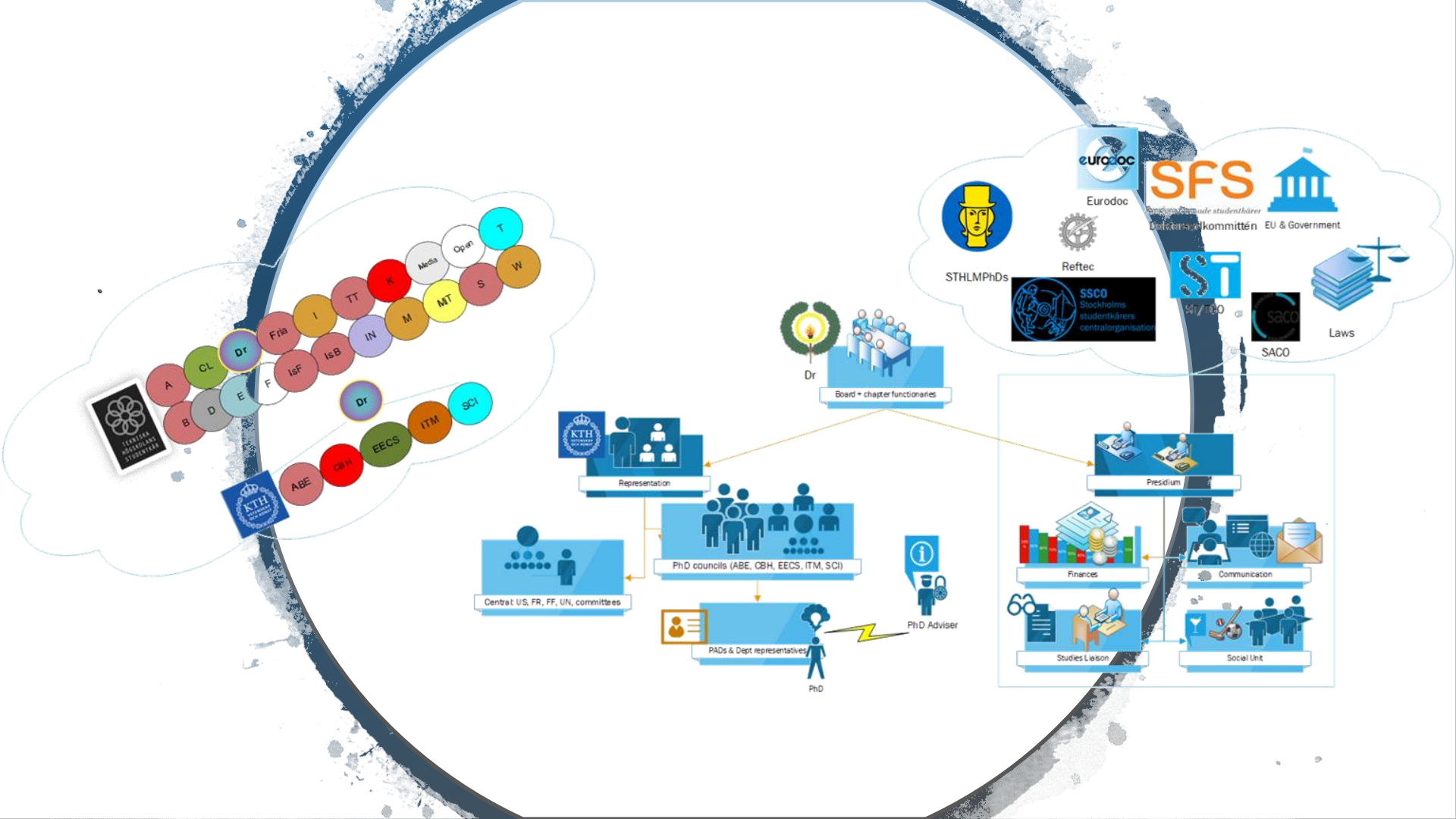
Union Management (KL)

Councils

Chapters: 20 (local) + Dr is special ...



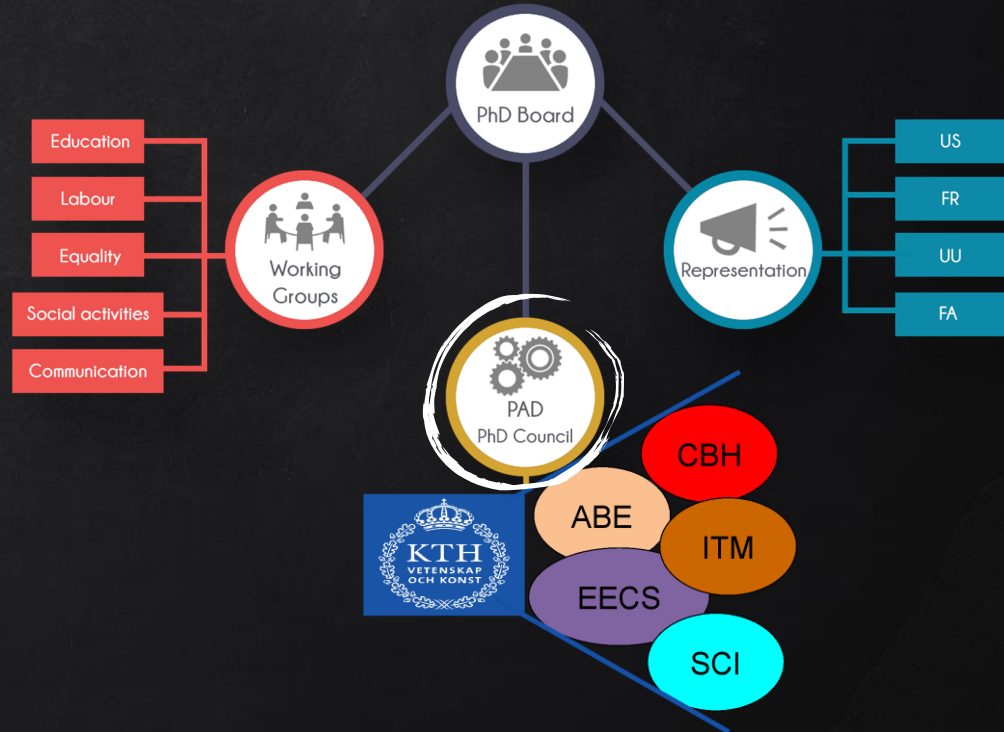




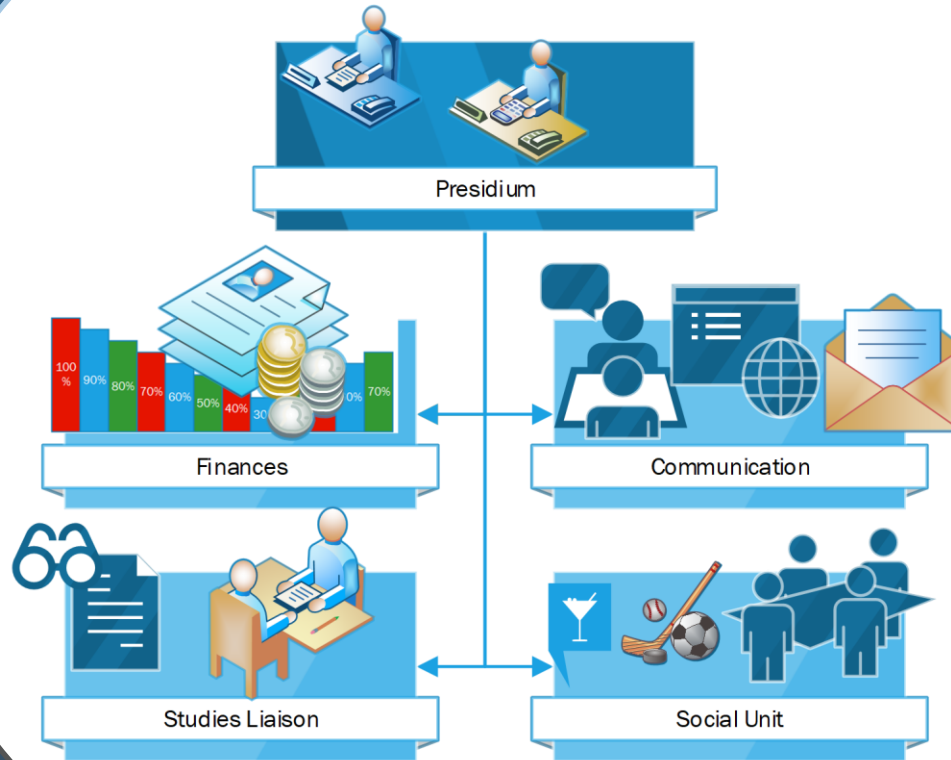


The Organisation: PhD Chapter

- The PhD Chapter represents all PhD students of KTH
- You apply for membership through the THS Student Union
- Each school has **PhD representatives**, you can apply to become one!
- Representation for the PhD Chapter is time compensated



The PhD Chapter Board Definition



Overlapping Jun-Jul / Jan-Dec

What does THS PhD Chapter do?

Taking care of all PhD students...



...when they start

(common introduction course & networking events)

...while they are here

(evaluation of quality of education & supervision)

(development of soft skills & complementary competencies)

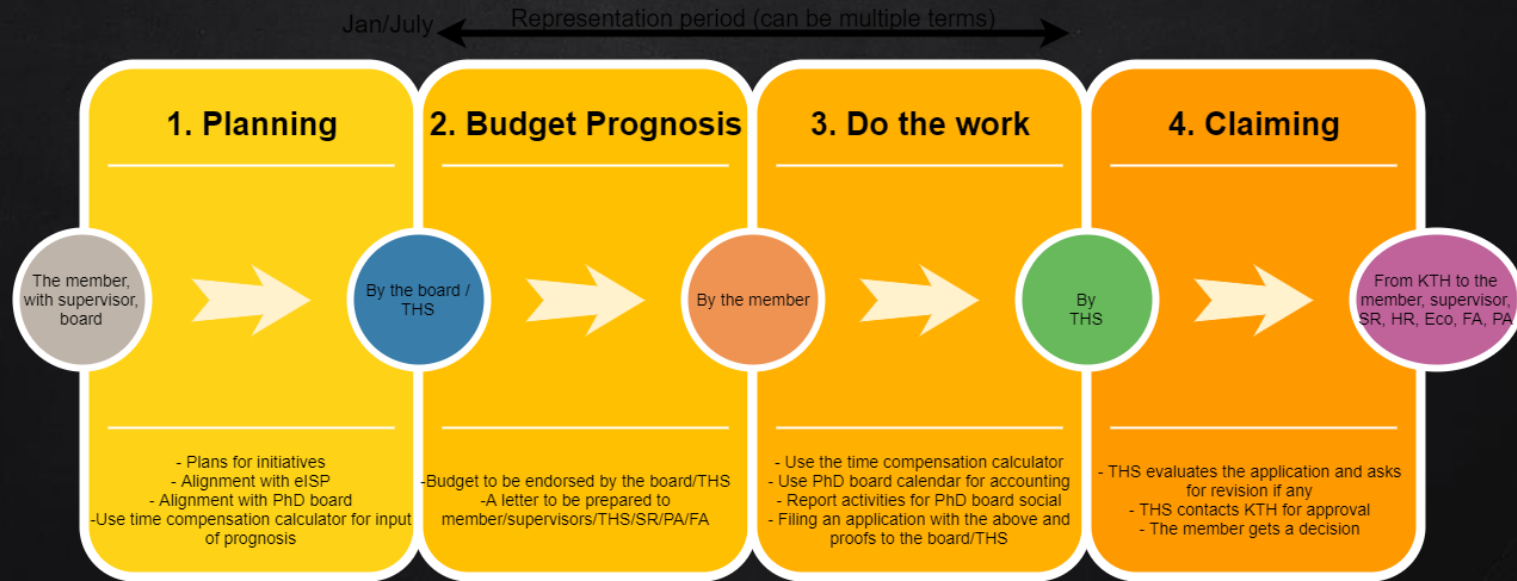
...when they are about to graduate

(career development & opportunities)

...Events and Representation (Centrally).

Time compensation

2 PhD positions per year for central and national level



Time compensation

Fixed rate + variable rate

Meeting Type	workload multiplier (xNumber of hours)
US	3-5*
FR	2.5-4*
BN/RN	2.5
AU	2
UU/FA	2-4*
RU/Språk/Stipen/Sustainability	2-4*
Board/Chapter meetings	2-3*
Other national level representations	2-5*

Item	Hours
Fixed rate	5x8
Board meetings	3x5
Chapter meetings	-
FR meetings	2x6x2.5
Seminars/events	11
Workgroup (school reorganisation+time compensation)	15+17
Promotion meetings	15x3x1.5
Total (days, hours/8)	25

(school/local levels are fixed under different budget)

Representation

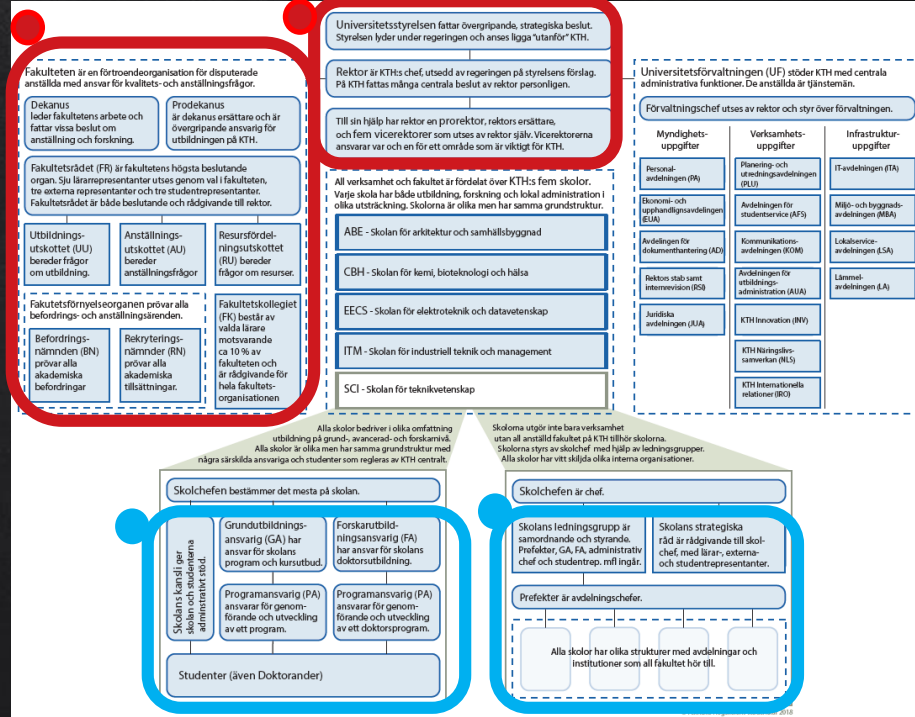
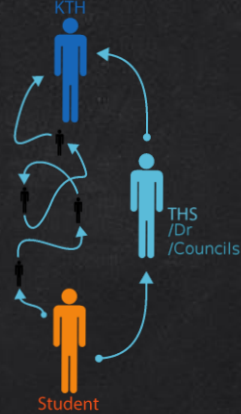
Centrally:

US,
FR,
UN,
FU



Locally:

LG, SR,
Committees, Programs



Fakultetsrådet

Fakultetsrådet

Kollegial förankring

Anställningsutskottet

Utbildningsutskottet

Resursfördelningsutskottet

Fakultetskollegiet

Befordringsnämnden

Rekryteringskommitté ABE

Rekryteringskommitté ITM

Rekryteringskommitté SCI

Rekryteringskommitté EECS

Rekryteringskommitté CBH

Fakultetsrådet

Fakultetsrådet företräder hela fakulteten och är ett rådgivande organ till rektor. Rådet har övergripande ansvar för frågor som gäller kvalitet i utbildning, forskning och samhällssamverkan.

Fakultetsrådet har följande sammansättning:

- Sju lärare som innehar läraranställning vid KTH och som har vetenskaplig eller konstnärlig kompetens, dvs har avlagt doktorsexamen eller motsvarande, varav en är ordförande.
- Tre externa ledamöter som inte är anställda inom KTH.
- Studenterna har rätt att vara representerade med tre ledamöter.

Tre representanter för arbetstagarorganisationerna har närvaro- och yttranderätt vid fakultetsrådets sammanträden.



Se även

[Mötestider](#)

[Arbetsordning m.m.](#)

[Mötesprotokoll](#)

[Beredningstider anställningar](#)



RIKTLINJE	Gäller från och med 2019-02-13	Darienummer V-2019-0111
Beslutsfattare Rektor	Datum för beslut 2019-02-12	Ansvarig avdelning Planering, Kvalitetsledning och förvaltningsjuridik

Riktlinje om utbildning på forskarnivå

Events

PhD chapter events Autumn 2018

Always in T-Centralen "TC" at Drottning Kristinas väg 29
Doors open at 17.17 Event starts at 18.18

October

2018-10-04	Thursday	40	Game Night
2018-10-11	Thursday	41	Game Night Deadline for Badges
2018-10-18	Thursday	42	workshop: How to Elect Council Members Deadline Voting
2018-10-19	Friday	42	PhD Pub
2018-10-24	Wednesday	43	Halloween Themed Chapter Meeting Horror Movie

November

2018-11-01	Thursday	44	Game Night
2018-11-07	Wednesday	45	Idea leading Paper Writing Workshops
2018-11-15	Thursday	46	KTH Innovation
2018-11-21	Wednesday	47	Game Night
2018-11-23	Friday	47	PhD Pub
2018-11-29	Thursday	48	Serendipity with Esmatizadeh

December

2018-12-05	Wednesday	49	Pedagogical Meetups and How to Make a Poster
2018-12-07	Friday	49	Council Election Day EECS
2018-12-07	Friday	49	PhD Pub
2018-12-10	Monday	50	Council Election Day
2018-12-11	Tuesday	50	Council Election Day
2018-12-13	Thursday	50	Lucia Baking
2018-12-17	Monday	51	Chapter Meeting with Christmas Setting
2018-12-18	Tuesday	51	Council Election day
2018-12-19	Wednesday	51	Council Election day

board@dr.kth.se



PhD chapter events Spring 2019

Always in T-Centralen "TC" at Drottning Kristinas väg 29
Doors open at 17.17 Event starts at 18.18

January

2019-01-10	Wednesday	2	Game Night
2019-01-16	Thursday	3	Quiz Night
2019-01-24	Wednesday	4	Research Impact: Ambitions and Practice
2019-01-30	Thursday	5	Game Night

February

2019-02-07	Wednesday	6	Science Slam
2019-02-13	Thursday	7	Valentine's Day Dancing
2019-02-21	Wednesday	8	Hybrid Methods and Flipped Classrooms Seminar
2019-02-27	Thursday	9	Pedagogical Meetups

March

2019-03-07	Wednesday	10	Chapter Meeting
2019-03-13	Thursday	11	Research Education and Policy Seminar
2019-03-21	Wednesday	12	KTH Future Seminar
2019-03-27	Thursday	13	Research and Education Synergy Challenges in Academia

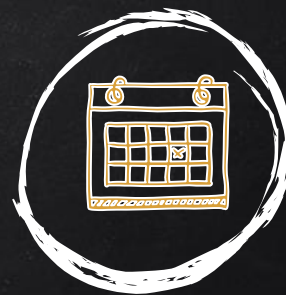
April

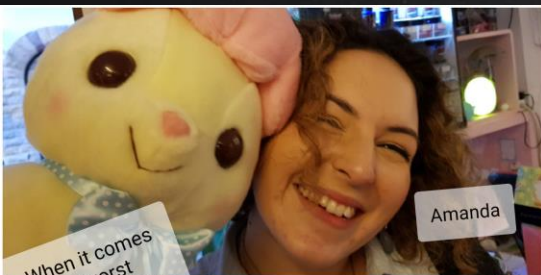
2019-04-04	Wednesday	14	Job Prospects for PhDs with Companies
2019-04-10	Thursday	15	Game Night
2019-04-18	Wednesday	16	Easter Crafts
2019-04-24	Thursday	17	Game Night

May

2019-05-02	Wednesday	18	Game Night
2019-05-08	Thursday	19	Interdisciplinary Workshop
2019-05-16	Wednesday	20	Chapter Meeting
2019-05-22	Thursday	21	Mentorship platform
2019-05-30	Wednesday	22	Summer Party

board@dr.kth.se





Amanda

When it comes to worst impersonation, none beat



and Robin

Apply before March 11, 2019

RISING STARS

The Workshop for Women
PhD Students at KTH



APRIL 26-27, 2019 | DJURÖNÄSET
CONFERENCE HOTEL

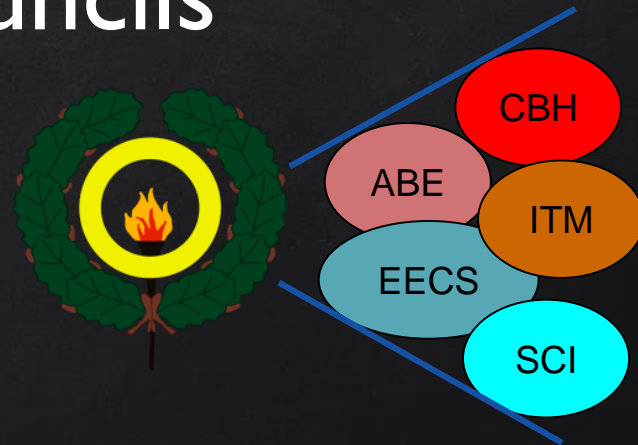
Take the step to
Lead with Confidence
Cultivate Your Presence
Develop Relational Intelligence

SPEAKERS
Jennifer Krahn & Annelene Decaux

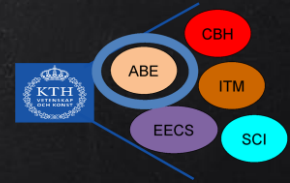
Sponsored by KTH & KTH Opportunities Fund



PhD School Councils



The PhD school council



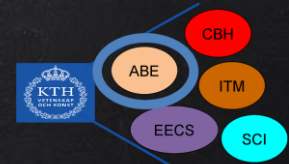
We have one Ph.D. student representing us in each council / group / committee on school level.

(Elected each year at the **PhD council**)

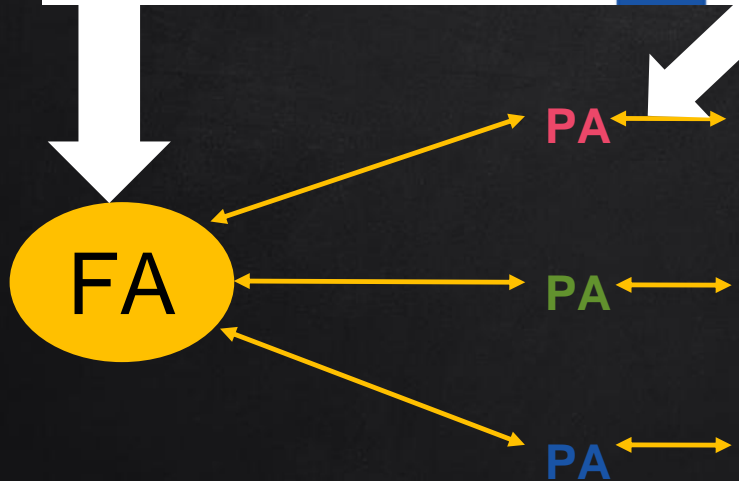
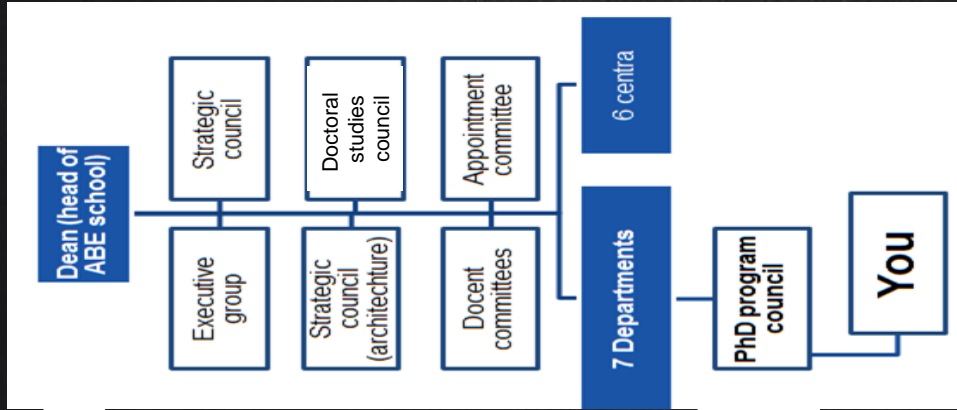
Board that can appoint representatives

Each PhD program has an elected PAD ("Programansvarig Doktorand") – **your go-to person!**

The PhD school council



Structure of PhD programs



Doctoral studies council

1 Director of doctoral studies (FA)

+

Program coordinators (PA)

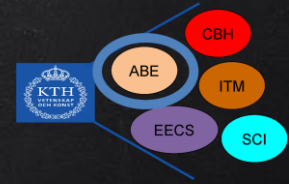
+

1 PhD student representative

=

Doctoral Studies Council

ABE School (e.g.)



PhD Program (Arkitektur)

PhD Program (Bygghvetenskap)

PhD Program (Humanists & Soc. Sci.)

PhD Program (Art, Tech. & Design)

PhD Program (Ground & Water tech.)

PhD Program (Planning & Decision analysis)

PhD Program (Management, Economy & Law)

PhD Program (Transport Science)

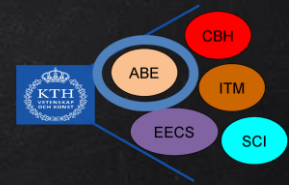
PhD Program (Geodesi & Geo informatics)



ABE
School

~=Department

ABE School




Programsansvarig – Program Responsible


PA (Arkitektur) 

PA (Byggeteknik) 


PA (Humanists & Soc. Sci.) 

PA (Art, Tech. & Design) 

PA (Ground & Water tech.) 

PA (Planning & Decision analysis) 

PA (Management, Economy & Law) 

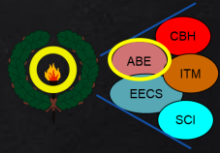
PA (Transport Science) 

PA (Geodesi & Geo informatics)

ABE
School



ABE School



Programsansvarig Doktorand – Program Responsible PhD

PAD (Arkitektur)

PAD (Byggvetenskap)

PAD (Humanists & Soc. Sci.)

PAD (Art, Tech. & Design)

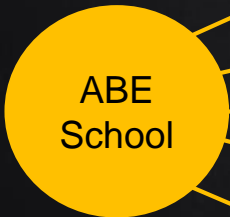
PAD (Ground & Water tech.)

PAD (Planning & Decision analysis)

PAD (Management, Economy & Law)

PAD (Transport Science)

PAD (Geodesi & Geo informatics)





COMMUNICATIONS

Our website and Facebook page are always update



Our visitors and likes are continuously increasing.



- News in PhD chapter website,
- Important communications via mailinglists
- incl. events,
- organizational changes
- and opportunities

More info at: <http://dr.kth.se> , [FB: fb.me/dr.kth.se](https://fb.me/dr.kth.se)

P.S. PhD as Employment

- Partially regulated in Higher education ordinance
- And subject to collective agreements (employer + unions)
- Salary ladder updated annually
- May include up to 20% departmental duties
- Conditions mostly influenced by the labour unions (e.g. SACO/SULF & ST)